

BHTZ-11/11

AFCI Combiner Box

ZBENY

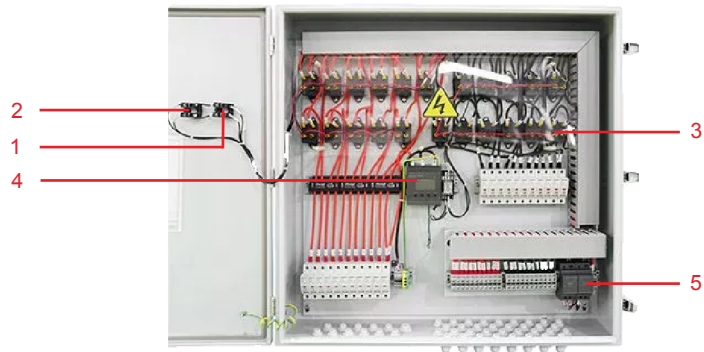


Application

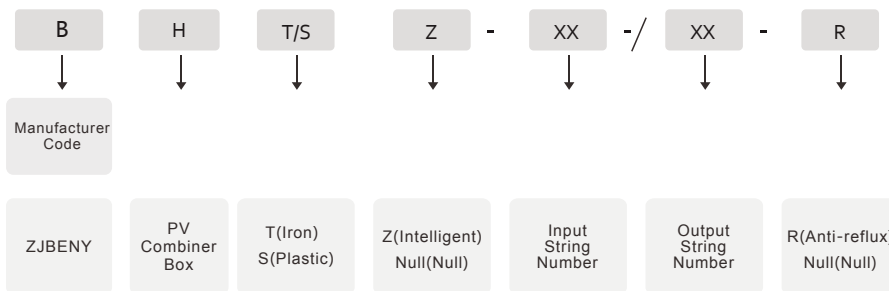
ZBENY The Arc Fault Circuit Interruption Combiner Boxes monitor the current and voltage of each strings and the temperature in enclosure, the integrated automatic contactors triggered when there is arc fault detected. So the PV DC strings will be shut down rapidly. The solution provides solar PV system safety. The DC contactors can be remotely controlled for easier system maintain.

Appearance Introduction

- 1 Emergency button
- 2 Start/Stop(Lockable)
- 3 Contactor
- 4 Monitoring Module
- 5 Power Supply



Type Instruction



Parameter

Model No.	BHTZ-11/11
Max Rated Voltage	1000VDC
Number of Input	11
Number of Output	11
Max Input Current Per Each String	20A
Connection Type of Input	PG09
Input Cable Size	Ø4-8mm
Max Output Current	20A
Connection Type of Output	PG 09, Ø4-8mm Customizable
DC Surge Arrester	T2/, In=20KA, Imax=40KA, Ucpv=1000VDC
Voltage of Monitoring Device	Need External Power Source AC230V or DC24V
Voltage of Contactor	24VDC (Built-in Power Supply)
Enclosure	Powder Coated Stainless Steel
Protection Degree	NEMA13 (IP65)
Ambient Temperature	-20°C ~ +60°C
Humidity	0-99%
Altitude	=2000m (derating > 2000m)
Installation method	Vertical / Horizontal
Standard	IEC62109 / IEC61439 (EN62109 / EN61439)